

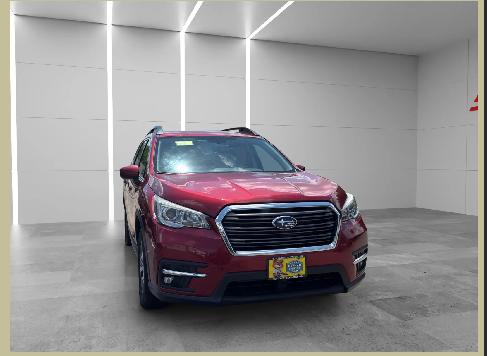
Massih Corp dba Advanced Auto Sales & Repair

237 E Washington St
North Attleboro, MA 02760

(508) 699-0022

<http://www.advancedautoma.com>

advancedauto130@outlook.com



2019 Subaru Ascent

Exterior Color: Red	Body Type: SUV
Interior Color: Tan	Fuel Type: Gasoline
VIN: 4S4WMAFD6K3430627	Doors: 4
Engine: 4-Cyl, Turbo, 2.4 Liter	Transmission: Automatic

FEATURES

Standard

- 4-Cyl, Turbo, 2.4 Liter
- Automatic, CVT w/Lineartronic
- AWD
- All Weather Pkg
- Blind-Spot Detection
- Hill Descent Control
- Trailer Stability Assist
- ABS (4-Wheel)
- Alarm System
- Keyless Entry
- Air Conditioning
- Power Windows
- Power Door Locks
- Adaptive Cruise Control
- Power Steering
- Tilt & Telescoping Wheel
- AM/FM/HD Radio
- CD/MP3 (Single Disc)
- SiriusXM Satellite
- Bluetooth Wireless
- SUBARU STARLINK
- Backup Camera
- Dual Air Bags
- Side Air Bags
- F&R Head Curtain Air Bags
- Knee Air Bags
- EyeSight System
- Heated Seats
- Power Seat
- Third Row Seat

Optional

- AUX
- DISTRONIC
- HD Radio
- Intermittent Wipers
- Video System
- Satellite Radio
- Side Curtain Airbags
- Head-Protection System
- Variable Assist Steering
- Keyless Entry
- Alarm System
- FR Stabilizing Bars

Prices for this vehicle as equipped do not include charges such as: License; Title; Registration Fees; State or Local Taxes; Finance Charges, Credit Investigation, Physical Damage or Liability Insurance; or Delivery Fee. Dealership makes no representation, expressed or implied, to any actual or prospective purchaser or owner of this vehicle as to existence, ownership accuracy, description, or condition of this vehicle, listed equipment, accessories, price or any warranties. Any and all differences must be addressed prior to the sale of the Vehicle.

MILEAGE:
90,246