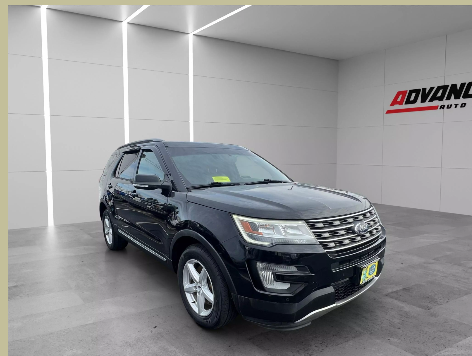


MASSIH CORP

237 E Washington St
North Attleboro, MA 02760

(508) 699-0022

<https://www.advancedautoma.com/>
advancedauto130@outlook.com



2016 Ford Explorer

Exterior Color: Black	Body Type: SUV
Interior Color: Black	Fuel Type: Gasoline
VIN: 1FM5K8DH5GGC28491	Doors: 4
Engine: 4-Cyl, EcoBoost, 2.3T	Transmission: Automatic

FEATURES

Standard

- Keyless Entry
- Rear Spoiler
- Auto, 6-Spd SelectShift
- AM/FM Stereo
- Air Conditioning, Rear
- SYNC
- AdvanceTrac
- Knee Air Bags
- CD/MP3 (Single Disc)
- Alloy Wheels
- Power Windows
- MyFord Touch
- Power Door Locks
- Side Air Bags
- Perimeter Alarm System
- Tilt & Telescoping Wheel
- Dual Air Bags
- Hill Start Assist Control
- ABS (4-Wheel)
- Daytime Running Lights
- 4WD
- Backup Camera
- Dual Power Seats
- Roof Rack
- Power Steering
- Air Conditioning
- Cruise Control
- F&R Head Curtain Air Bags
- Traction Control
- Keyless Start

Optional

MILEAGE:
114,967

Prices for this vehicle as equipped do not include charges such as: License; Title; Registration Fees; State or Local Taxes; Finance Charges, Credit Investigation, Physical Damage or Liability Insurance; or Delivery Fee. Dealership makes no representation, expressed or implied, to any actual or prospective purchaser or owner of this vehicle as to existence, ownership accuracy, description, or condition of this vehicle, listed equipment, accessories, price or any warranties. Any and all differences must be addressed prior to the sale of the Vehicle.